

# **IBD181**

**EXAR XR21V1410**

**Serial Port Mini PCI-E Card  
(For RS-232)**

## **USER GUIDE**

Version 1.0

---

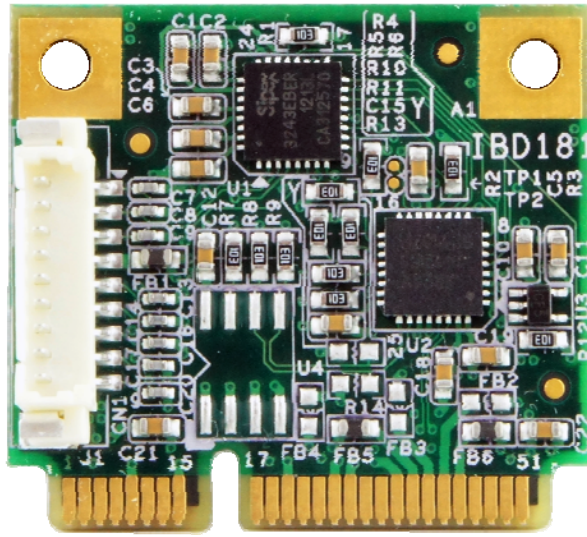
## **Acknowledgments**

All other product names or trademarks are properties of their respective owners.

---

# Table of Contents

Connectors Pin Definition .....	1
CN1: COM1 Serial Port.....	1
IBD181 Mechanical Drawing.....	2
Cable Mechanical Drawing .....	3
Mini PCI-E Serial Port Driver Installation .....	4



IBD181 Mini PCI-E Serial Port Card

**IBD181  
EXAR XR21V1410  
Serial Port Mini PCI-E Card  
(For RS-232)**

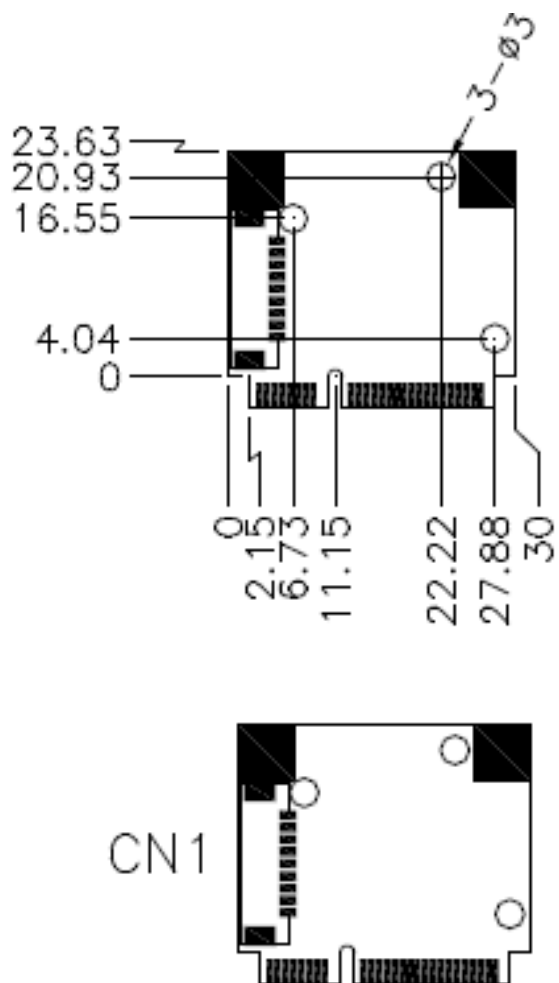
## Connectors Pin Definition

### CN1: COM1 Serial Ports

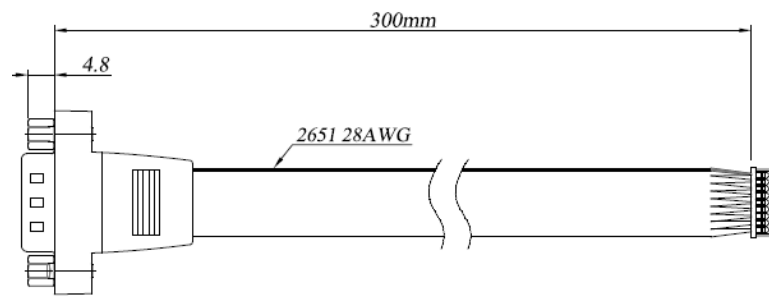
Matching connector: Molex P/N 51021-0900

Pin #	Signal Name
1	DCD, Data carrier detect
2	RXD, Receive data
3	CTS, Clear to send
4	GND, ground
5	TXD, Transmit data
6	RTS, Request to send
7	DSR, Data set ready
8	DTR, Data terminal ready
9	RI, Ring indicator

## IBD181 Mechanical Drawing



## Cable Mechanical Drawing

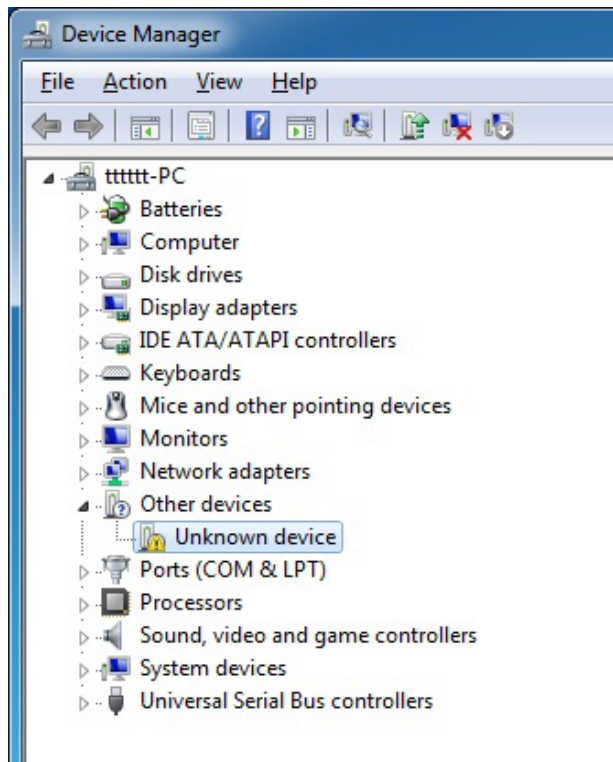


---

## Mini PCI-E Serial Ports Driver Installation

---

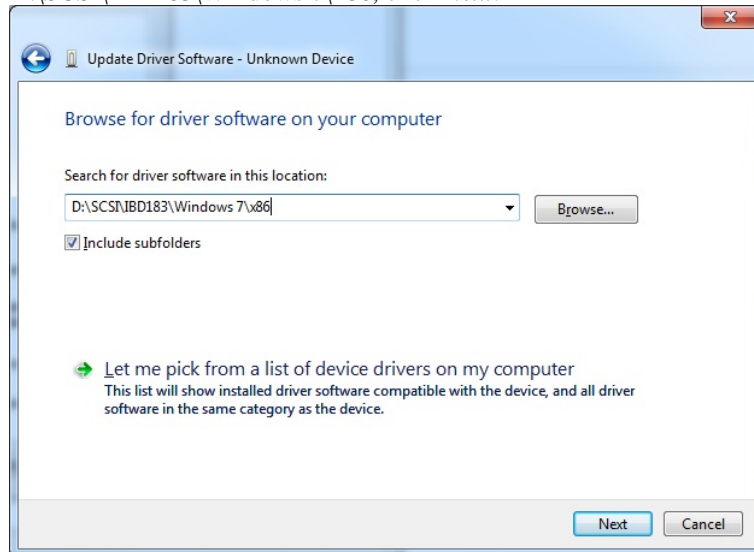
1. In the Windows OS, go to the Computer Device Manager screen. In the "Other devices" as shown, right click "Unknown Device".



2. On the "Unknown Device Properties" screen, click *Update Driver*.



3. On the “Update Driver Software“ screen, click *Browse* to find the driver’s path in the DVD provided or enter the path directly – D:\SCSI\IBD183\Windows 7\x86, click *Next*.



4. The Setup process is now complete. Click *Close*.

