

IBD183
USER GUIDE (Version: 1.0)
EXAR XR21V1412
Mini PCI-E Serial Ports Adaptor Card

Connectors Pin Definition

CN1: COM1 for RS422/485 interface

Matching connector: Molex P/N 51021-0500

Pin #	Signal Name
1	TX
2	TX_N
3	RX
4	RX_N
5	GND, ground

CN2: COM2 Serial Ports

Matching connector: Molex P/N 51021-0900

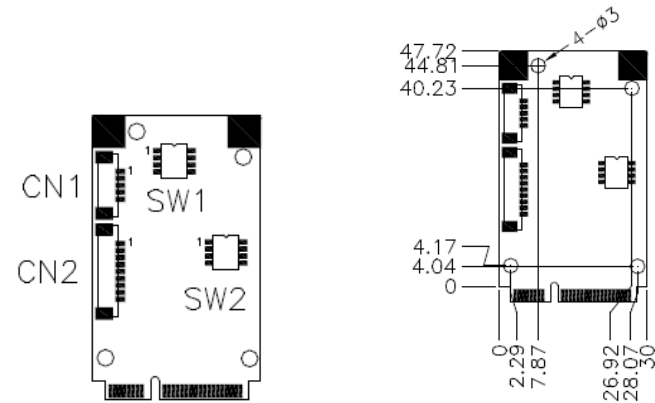
Pin #	Signal Name
1	DCD, Data carrier detect
2	RXD, Receive data
3	CTS, Clear to send
4	GND, ground
5	TXD, Transmit data
6	RTS, Request to send
7	DSR, Data set ready
8	DTR, Data terminal ready
9	RI, Ring indicator

Switch Settings:

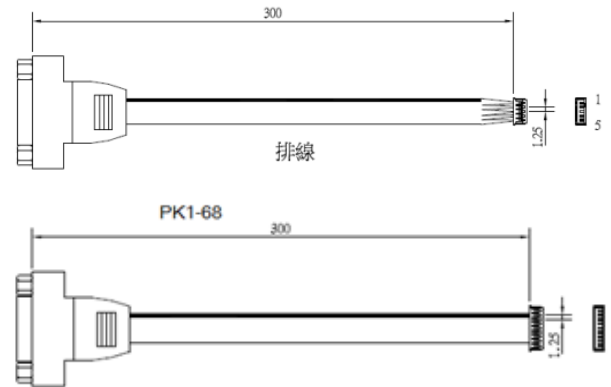
	SW1			
	1	2	3	4
RS-422	off	off	on	on
RS-485	on	on	on	on

	SW2			
	1	2	3	4
RS-422	off	on	off	on
RS-485	on	off	on	off

IBD183 Mechanical Drawing

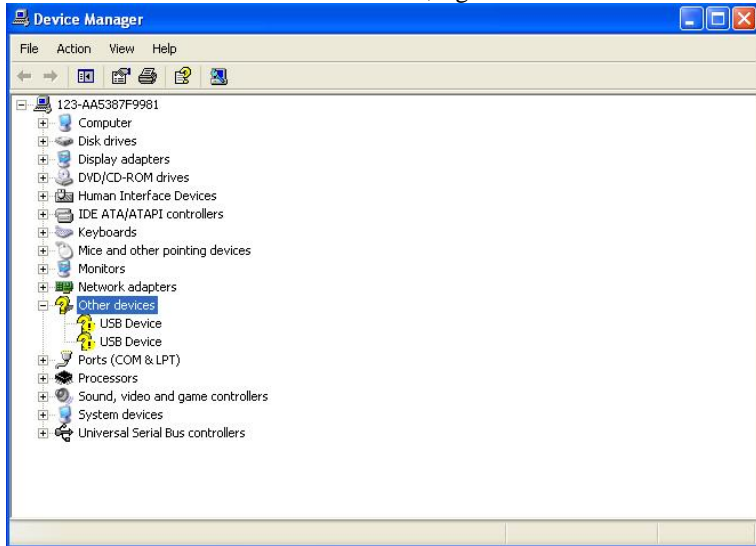


Cable Mechanical Drawing



Mini PCI-E Serial Ports Driver Installation

1. In the Windows OS, go to the Computer Management (Device Manager) screen. In the 'Other devices' as shown, right click "USB Device".

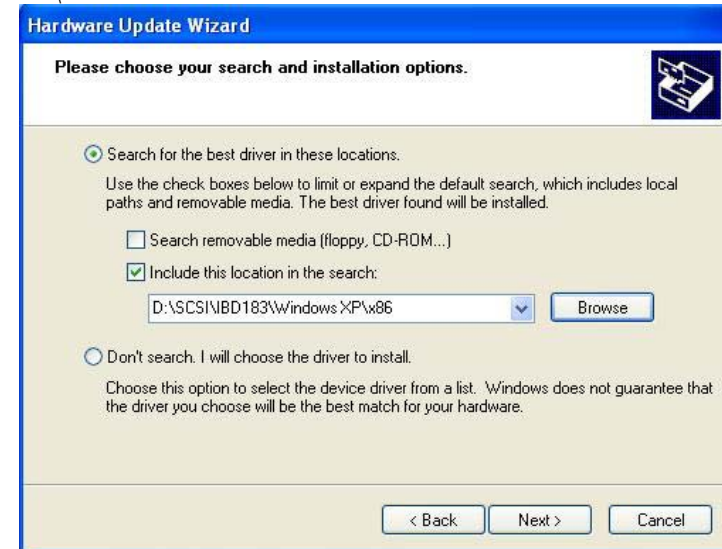


2. In the PCI Serial Port Properties screen, click *Reinstall Driver*.

3. In the Hardware Update Wizard screen, select "No, not this time" and click *Next* to continue.

4. Select "Install from a list or specific location (Advanced)", and click *Next* to continue.

5. Choose "search" and "installation" options, click the checkbox of "Include this location in the search", and click *Browse* to find the driver's path in the CD provided or enter the path directly - \SCSI\IBD183\Windows XP\x86



6. Click *Finish* to close the wizard.



7. There are four serial ports. Therefore, the Hardware Update Wizard procedure will be repeated for the other serial port.